



98044
 with Adjustable Backrest



98044-088
 with Optional Flat Top

MODEL 98044

- All laminated construction
- Choose flat top or adjustable backrest
- No additional charge for adjustable backrest
- Adjustable backrest with 6 settings of approximately: 60°, 55°, 50°, 43°, 36° & 27°
- Sliding doors can be positioned for open shelf access left, right or center
- Sliding doors are on both sides of the table
- Each section has one shelf
- Seamless rounded corners on top sections
- 2" firm foam padding
- Heavyweight, knit-backed upholstery
- Four sizes
- Ships assembled
- 425 lbs. load capacity under normal use (193 kg)

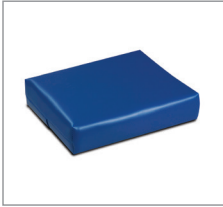
SPECIFICATIONS

98044-27	72" L x 27" W x 31" H
98044-30	72" L x 30" W x 31" H
98044-28	78" L x 27" W x 31" H
98044-38	78" L x 30" W x 31" H

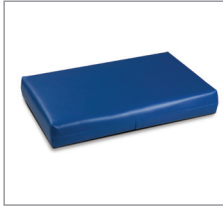


Prop 65 Warning

! **WARNING:** This product can expose you to chemicals, including diisononyl phthalate (DINP), which is known to the State of California to cause cancer. For more information go to www.P65Warnings.ca.gov.



20- Small Pillow



60- Large Pillow



030- SPaper Dispenser



040- Paper Cutter



034- Paper Dispenser/
Cutter Combo



009- Nose Hole

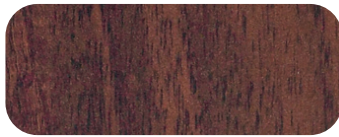


055-Door Locks



088-Flat Top

Laminate Colors



Dark Cherry



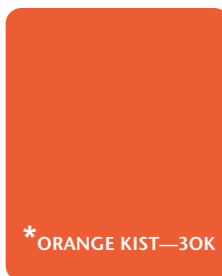
Maple



Gray

Standard Upholstery Colors

NOTE: Other colors may be available by request, although it may result in upcharges and longer lead times.



***UPCHARGE FOR THESE SPECIAL COLORS**