



**MODELS: 91013-27 & 91013-30**

- No upcharge for adjustable backrest
- All laminate construction
- Sleek panel leg design
- Laminate shelf & two drawers with easy-clean, plastic interiors
- Adjustable backrest with 6 settings of approximately: 27°, 36°, 43°, 50°, 55° & 60°
- Scratch resistant topcoat finish
- Ships flat for easy handling and extra savings
- Fast and easy assembly
- Seamless rounded corner top
- 2" firm foam padding (5 cm)
- Heavyweight, knit-backed upholstery
- 400 lbs. load capacity under normal use (181 kg)

SPECIFICATIONS

91013-27	72" L x 27" W x 31" H
91013-30	72" L x 30" W x 31" H



**Prop 65 Warning**

**!** **WARNING:** This product can expose you to chemicals, including chromium, which is known to the State of California to cause cancer or reproductive toxicity. For more information go to [www.P65Warnings.ca.gov](http://www.P65Warnings.ca.gov).

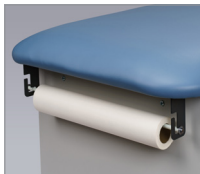
**Options**



034– Paper Dispenser & Holder Combo



040– Paper Holder



030– Paper Dispenser



088–Flat Top



055– Door & Drawer Locks



009–Nose Hole

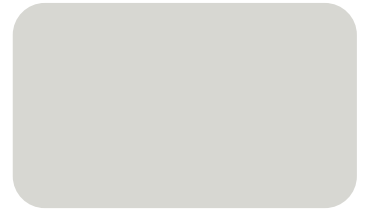
**Laminate Colors**



*Dark Cherry*



*Maple*



*Gray*

**Standard Upholstery Colors**

*NOTE: Other colors may be available by request, although it may result in upcharges and longer lead times.*



SLATE BLUE—3SB



WEDGEWOOD—3WW



ROYAL BLUE—3RB



\*AMERICAN RED—3AR



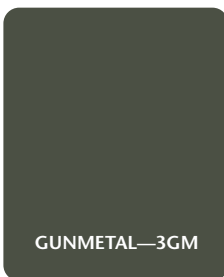
BURGUNDY—3BG



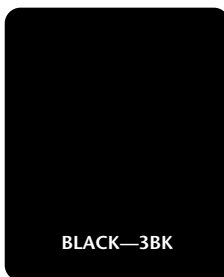
WARM GRAY—3WG



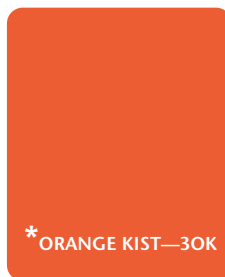
COUNTRY MIST—3CM



GUNMETAL—3GM



BLACK—3BK



\*ORANGE KIST—3OK



\*DEEP PURPLE—3DP



\*GROTTO GREEN—3GG

**\*UPCHARGE FOR THESE SPECIAL COLORS**

*NOTE: Due to the variations in computer monitors, tablets, smartphones, other electronic displays and printers, actual colors may vary. Actual samples are available in most cases.*