



**MODEL 86200**


- Features easy-clean, two-piece top with pneumatic, adjustable backrest
- Electric power height adjustment with foot control
- Ultra-strong, uni-frame base and top construction
- Heavy duty, all welded, lift mechanism
- Durable gray powder-coated steel frame
- Self-lubricating pivot points
- Smooth 110 volt electric height adjustment
- Power supply and motor meets UL 60601-1 and CAN/CSA C22.2 601.1
- Hands-free low voltage foot control
- Easy service, self contained, electrical components
- Seamless, rounded corner, upholstered top
- 1.5" (4 cm) ultra-firm padding
- Low height may help achieve ADA tax credit
- Customize with options
- Made in the USA by Clinton Industries
- 450 lbs. (204 kg) load capacity under normal use

**SPECIFICATIONS**

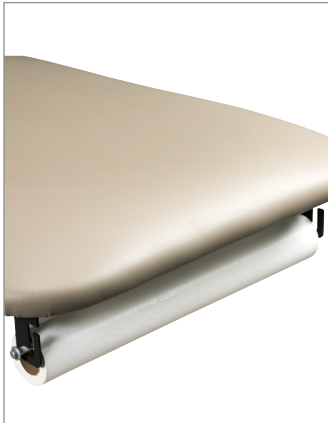
Overall	72" L x 27" W x 18.5 –35.5" H
Backrest	38" L x 27" W



**California residents please be advised of the following, pursuant to Proposition 65:**

 **WARNING:** This product can expose you to chemicals, including chromium, which is known to the State of California to cause cancer or reproductive toxicity. For more information go to [www.P65Warnings.ca.gov](http://www.P65Warnings.ca.gov).

**1**



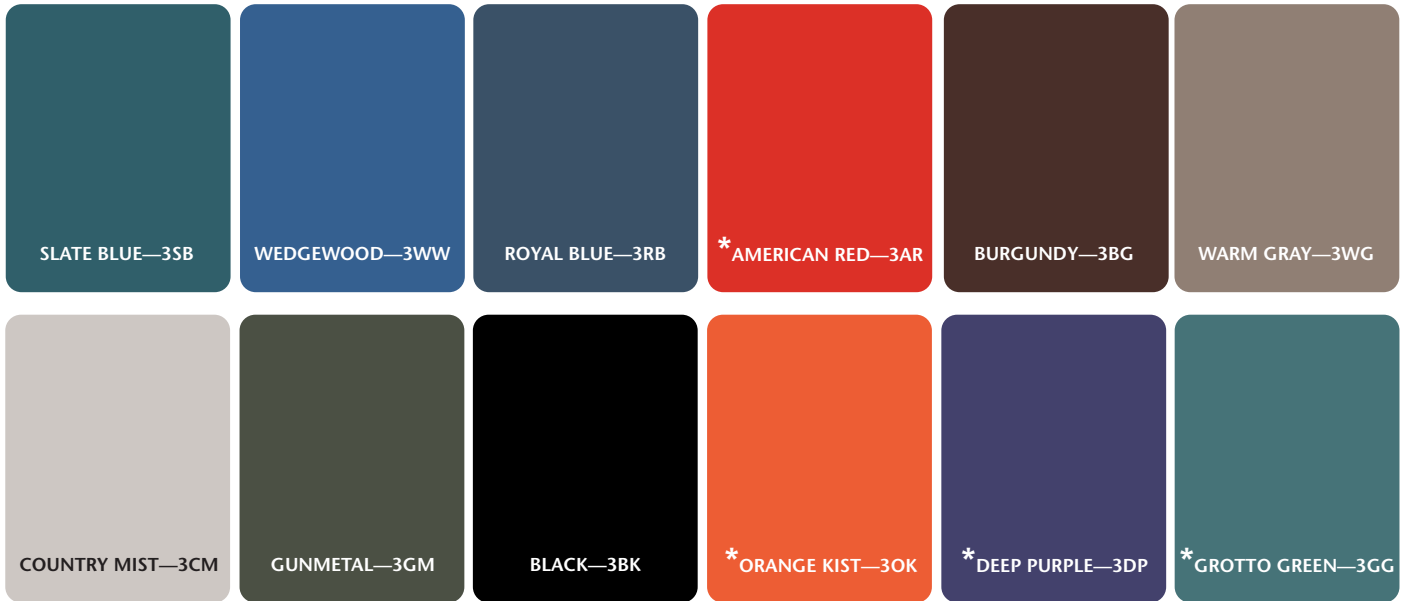
**030 Paper Dispenser** — Accommodates paper rolls from 18" (45.72cm) to 21" (53.34cm) wide

**040 Paper Cutter** — Clear plastic with elastic strap and buckle

**034 Paper Dispenser/Cutter Combo** — Paper dispenser and paper cutter ordered as one option

**Standard Upholstery Colors**

*NOTE: Other colors may be available by request, although it may result in upcharges and longer lead times.*



**\*UPCHARGE FOR THESE SPECIAL COLORS**

*NOTE: Due to the variations in computer monitors, tablets, smartphones, other electronic displays and printers, actual colors may vary. Actual samples are available in most cases.*